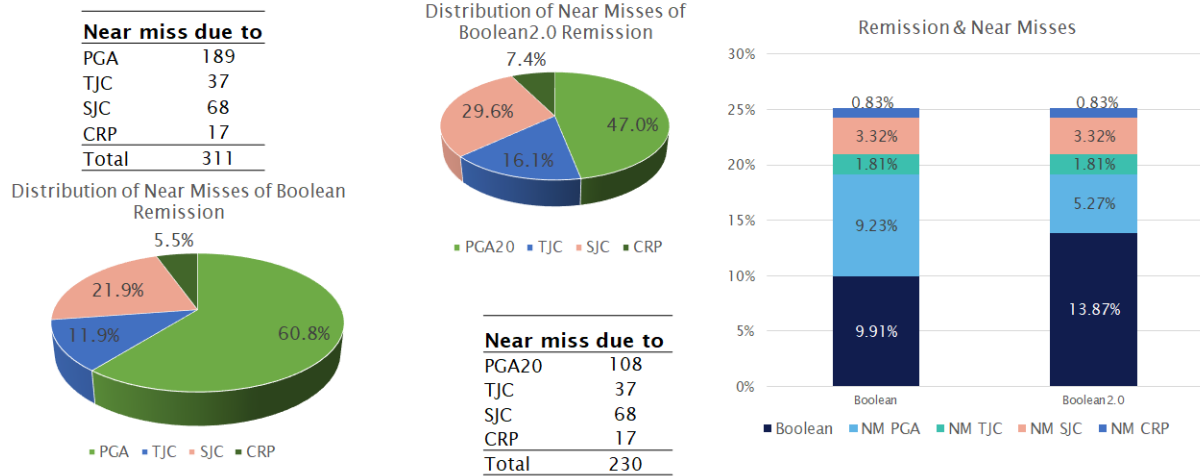
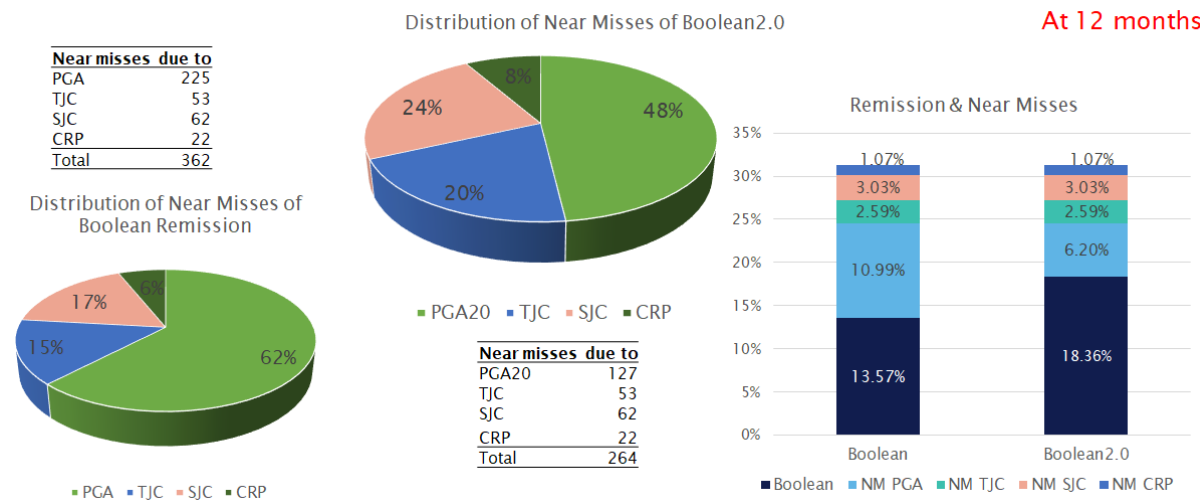


Supp-Figure 1: Rates of remission by modified Boolean classifications, using a PGA cut-off of 1.0 (“Boolean”), 1.5, 2.0, 2.5 or omitting the PGA completely (BooleanX) as well as for the SDAI, CDAI and DAS28 definition. Rates at 12 months in % of total, separately depicted for those in early RA on the left and for established RA on the right.

At 6 months



At 12 months



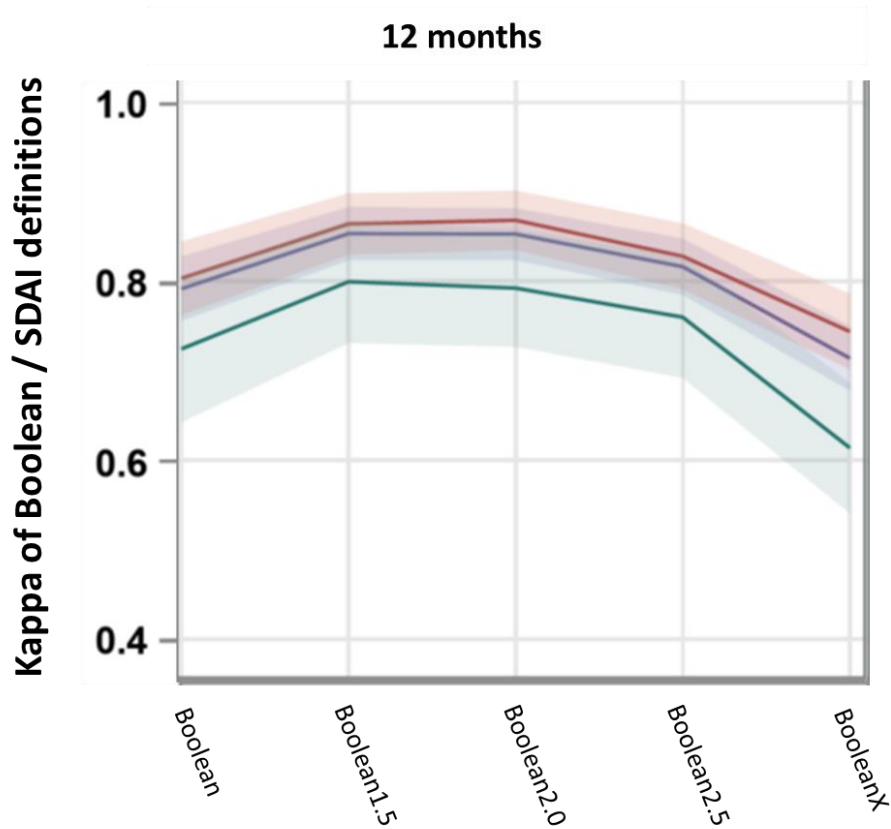
Supp-Figure 2: Overview of patients in near misses of Boolean Remission at 6 months (upper part) and 12 months (lower part). Number (percentages in pie charts) of patients not fulfilling 1 of the 4 Boolean criteria on the left. Number (percentages in pie charts) of patients not fulfilling 1 of the 4 Boolean2.0 criteria in the middle (using the PGA 2cm cut-off). On the right: Rates of people in remission or near remission based on either the Boolean or the Boolean2.0 definition.

		6 months			12 Month		
		Boolean1.0	Boolean2.0	BooleanX	Boolean1.0	Boolean2.0	BooleanX
SDAI	Early RA						
	Patients in SDAI remission among those fulfilling Boolean remission definition	93.9	87.7	69.4	95.5	89.3	72.6
	Patients in Boolean remission among those fulfilling SDAI remission definition	70.8	92.1	95.4	76.4	90.9	93.1
	Overall % concordantly classified	93.4	95.9	90.8	93.2	95	89.5
	Established RA						
	Patients in SDAI remission among those fulfilling Boolean remission definition	85	75.4	47.4	91.2	75.8	51
	Patients in Boolean remission among those fulfilling SDAI remission definition	73.9	93.5	97.8	62.7	86.7	91.6
	Overall % concordantly classified	98	98.2	94.6	96.2	96.4	91.6
			6 months			12 Month	
		Boolean1.0	Boolean2.0	BooleanX	Boolean1.0	Boolean2.0	BooleanX
CDAI	Early RA						
	Patients in CDAI remission among those fulfilling Boolean remission definition	91.4	82.8	65.0	92.8	85.8	69.8
	Patients in Boolean remission among those fulfilling CDAI remission definition	71.3	90.0	92.3	75.4	88.6	90.8
	Overall % concordantly classified	93.2	94.6	89.1	92.4	93.6	88.0
	Established RA						
	Patients in CDAI remission among those fulfilling Boolean remission definition	80.0	66.7	41.1	87.7	71.6	48.3
	Patients in Boolean remission among those fulfilling CDAI remission definition	69.6	82.6	84.8	56.8	77.3	81.8
	Overall % concordantly classified	97.7	97.1	93.3	95.2	95.0	90.2

CDAI

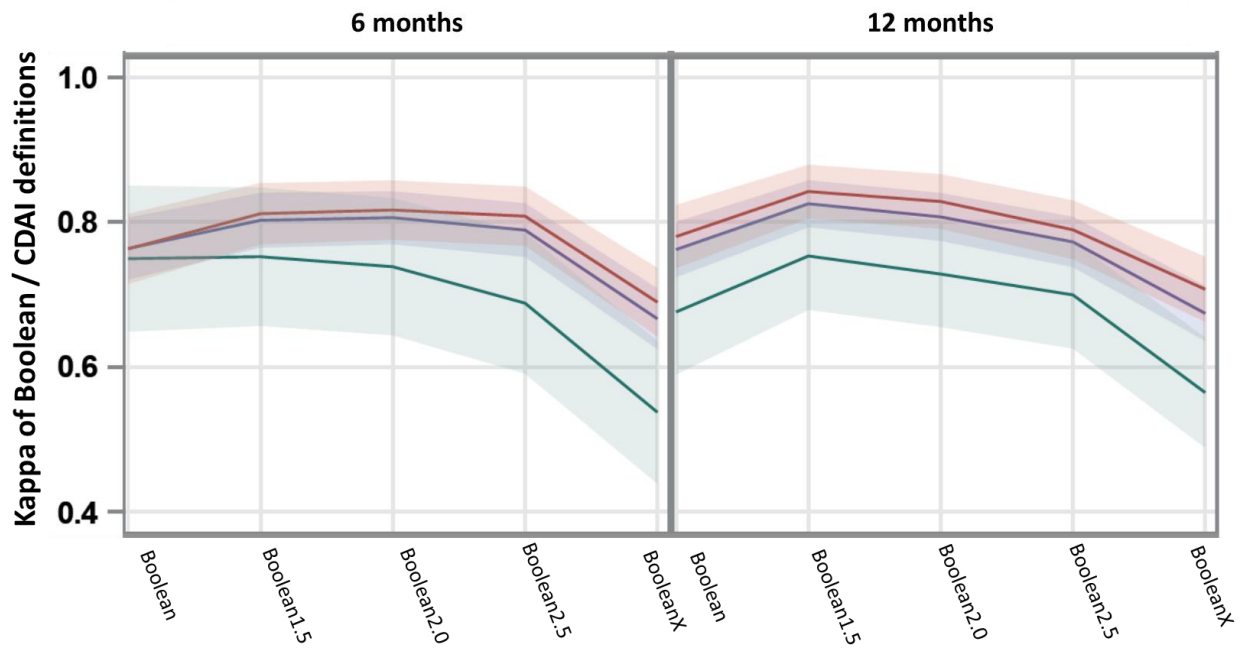
	6 months			12 Month		
	Boolean1.0	Boolean2.0	BooleanX	Boolean1.0	Boolean2.0	BooleanX
Early RA						
Patients in CDAI remission among those fulfilling 3vBoolean remission definition	91.4	83.0	65.6	93.2	85.5	69.0
Patients in 3vBoolean remission among those fulfilling CDAI remission definition	76.1	95.7	98.6	80.5	95.2	97.4
Overall % concordantly classified	94.1	95.5	89.9	93.7	94.8	88.6
Established RA						
Patients in CDAI remission among those fulfilling 3vBoolean remission definition	78.3	62.9	38.1	86.2	71.7	47.1
Patients in 3vBoolean remission among those fulfilling CDAI remission definition	78.3	95.7	97.8	63.6	86.4	93.2
Overall % concordantly classified	97.9	97.0	92.2	95.6	95.6	89.7

Supp-Table 1: Agreement Rates (% concordantly classified) between different modified Boolean remission definitions with the index-based remission definitions. Provided for 6 & 12 months. Upper table: Agreement with SDAI remission, middle table with CDAI remission; lower table agreement of 3vBoolean (including SJC28, TJC28, PGA as criteria) with CDAI remission.



Kappa	All patients	Early RA	Established RA
Boolean	0.79 (0.76 – 0.83)	0.80 (0.76 – 0.84)	0.72 (0.64 – 0.81)
Boolean1.5	0.85 (0.82 – 0.88)	0.86 (0.83 – 0.90)	0.80 (0.73 – 0.87)
Boolean2.0	0.85 (0.82 – 0.88)	0.87 (0.84 – 0.90)	0.80 (0.73 – 0.86)
Boolean2.5	0.81 (0.78 - 0.84)	0.83 (0.79 - 0.86)	0.76 (0.70 – 0.83)
BooleanX	0.71 (0.67 – 0.75)	0.74 (0.70 – 0.79)	0.61 (0.54 – 0.69)

Supp-Figure 3: Kappa with confidence intervals between modified Boolean remission categories and SDAI remission, separately for early RA (red line) and established RA (green line) and all RA (blue line) at 12 months. Additional table providing kappa estimates with confidence intervals in brackets.



Supp-Figure 4: Kappa with confidence intervals between modified Boolean remission categories and CDAI remission, separately for early RA (red line), established RA (green line) and all RA (blue line) at 6 and 12 months.