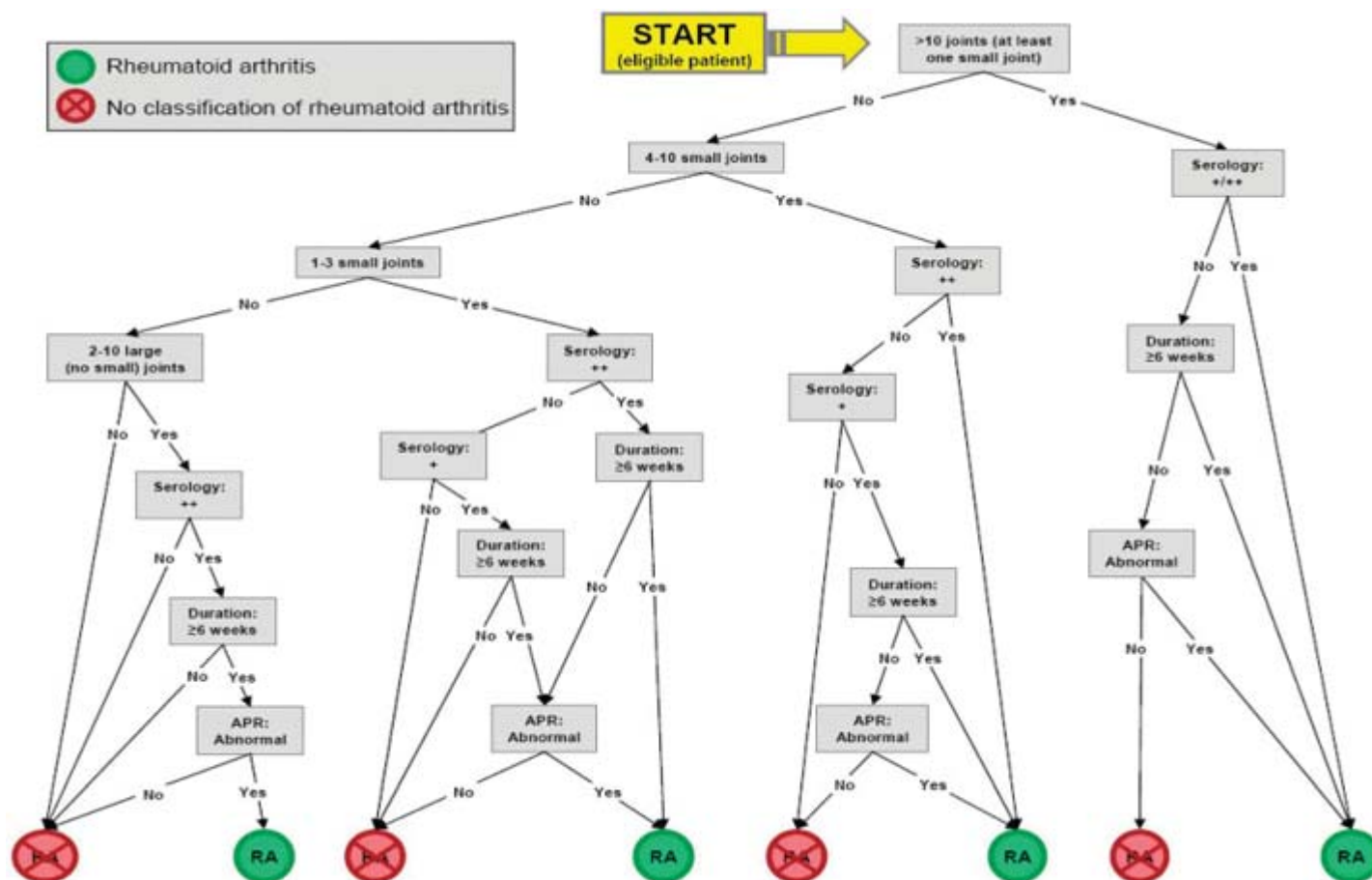


## 2010 RA Classification - Tree

THE 2010 TREE ALGORITHM FOR CLASSIFYING DEFINITE RA (GREEN CIRCLES) OR FOR EXCLUDING ITS PRESENCE (RED CIRCLES) AMONG THOSE WHO ARE ELIGIBLE TO BE ASSESSED BY THE 2010 ACR-EULAR RA CLASSIFICATION CRITERIA



APR = acute-phase response. Serology: + = low-positive for rheumatoid factor (RF) or anti - citrullinated protein antibody (ACPA); serology: ++ = high-positive for RF or ACPA; serology: +/++ = serology either + or ++.

Aletaha D, Neogi T, Silman A, Funovits J, Felson D, et al. 2010 Rheumatoid Arthritis Classification Criteria: An American College of Rheumatology / European League Against Rheumatism Collaborative Initiative. *Arthritis Rheum* 2010;62:2569-81.