

Table 1
Baseline Count of Practicing Rheumatologists, 2005
(AMA File Supplemented with ACR Membership List)

Training	Adult Rheumatology	Pediatric Rheumatology
Total	4,946	218

Table 2
Percentage of Adult and Pediatric Rheumatologists Who Treat Patients

Training	Adult Rheumatology	Pediatric Rheumatology
Total	94%	92%

Figure 1
Age Distribution of Adult Rheumatologists, 2005

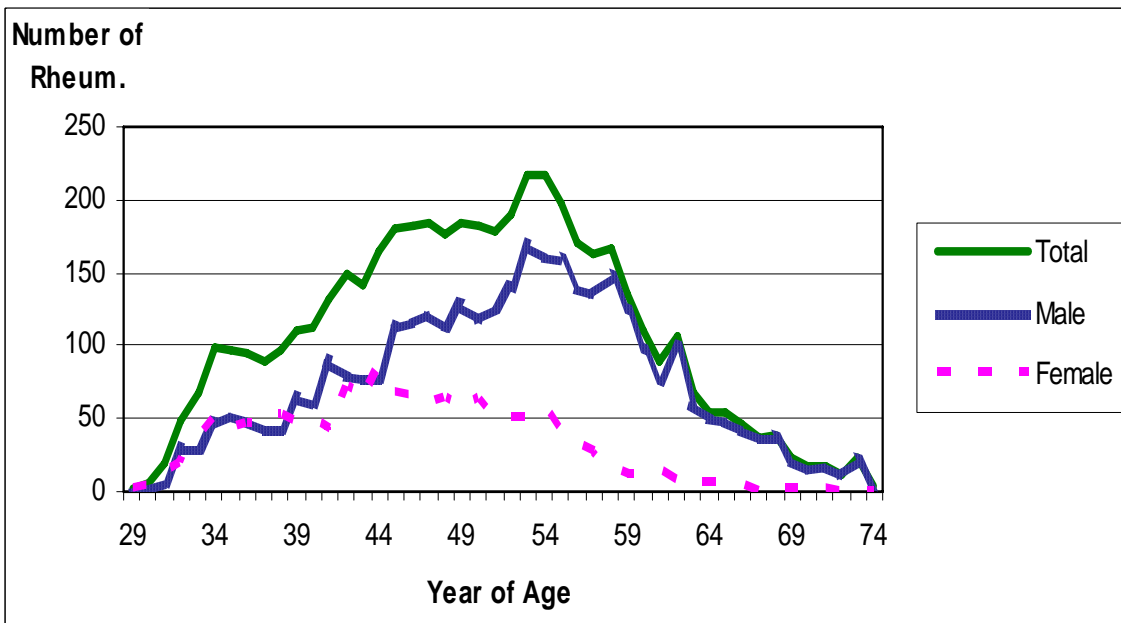


Figure 2
Age Distribution of Pediatric Rheumatologists, 2005

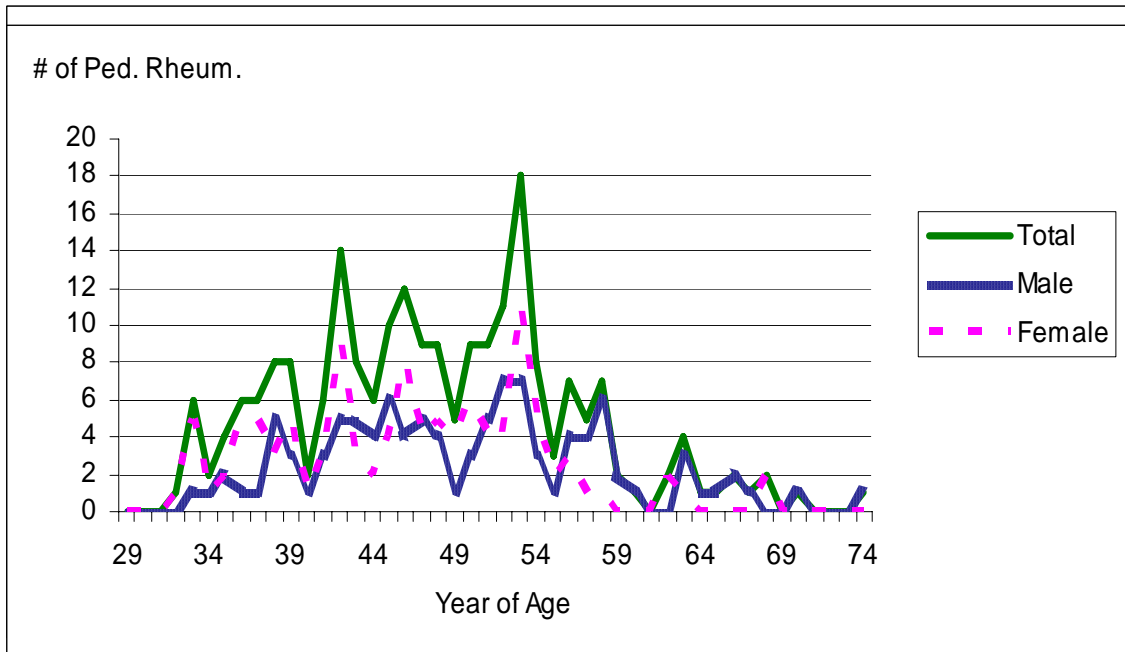


Figure 3
Concentration of Adult Rheumatologists Across the U.S., 2005

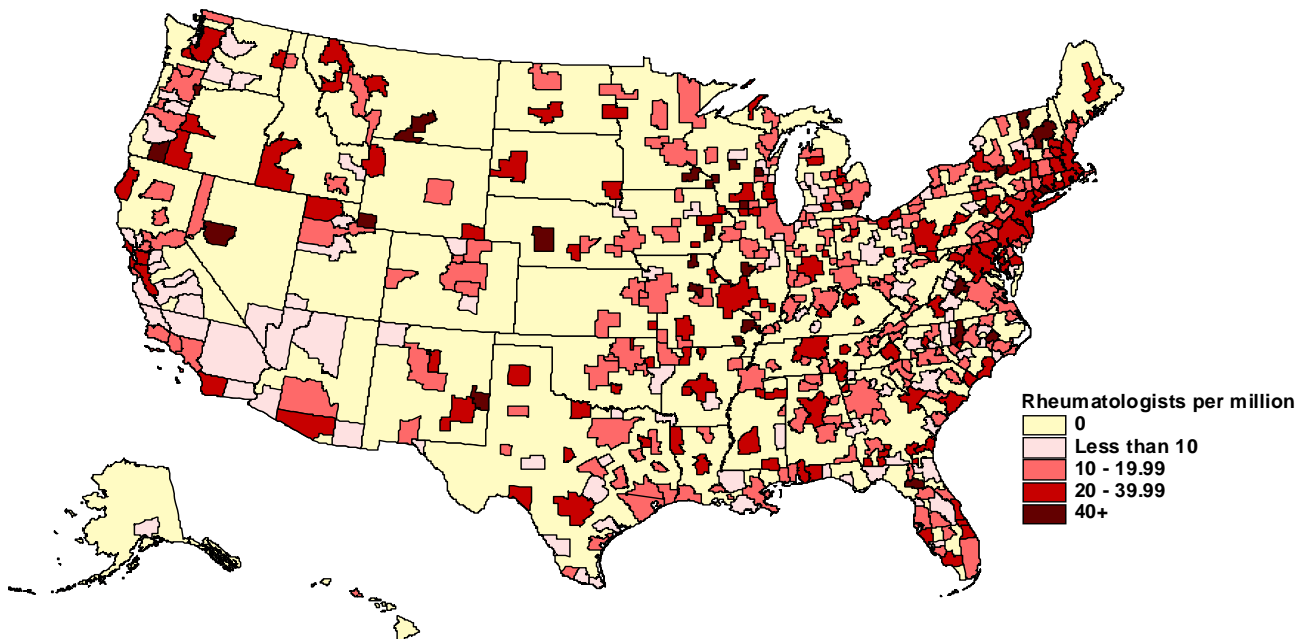


Figure 4
Concentration of Pediatric Rheumatologists Across the U.S., 2005

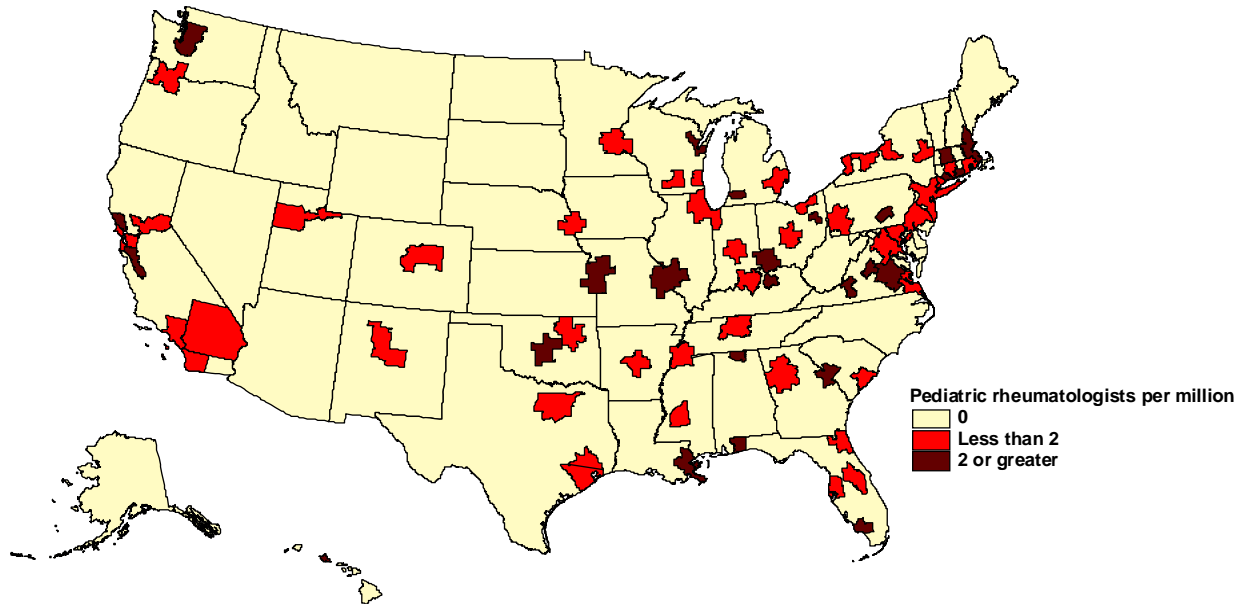


Figure 5
Wait Time to First Appointment for Non-Urgent Patients

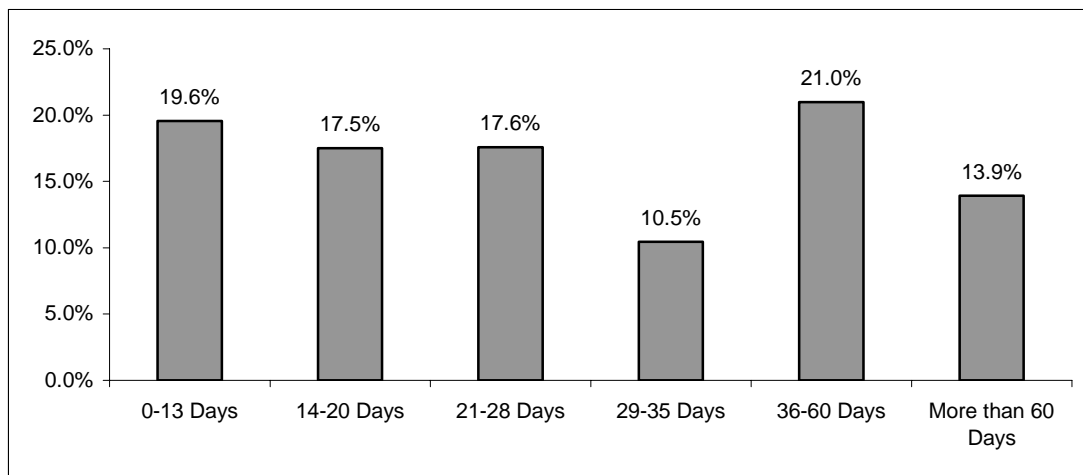
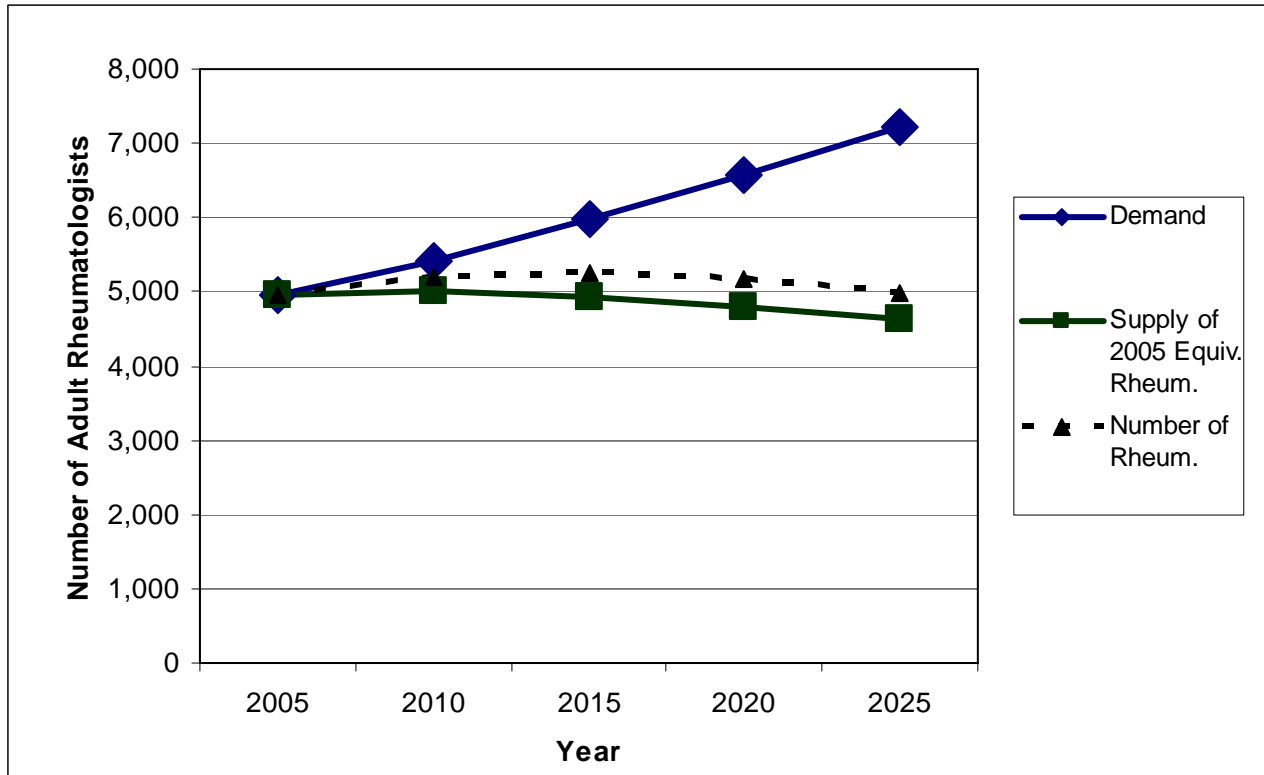


Table 3
Population Trends (Millions)

	2005	2010	2015	2020	2025	% Increase 2005 to 2025
<20	81,893	83,236	86,062	88,887	91,996	12.3%
20-64	175,986	185,456	188,871	192,285	194,656	10.6%
65-84	32,457	34,120	40,742	47,363	54,607	68.2%
85+	5,195	6,123	6,696	7,269	8,436	62.4%

Figure 6
Base Case: Adult Rheumatologists, 2005-2025*†



* The 2005-6 workforce study included an assumption that current supply equaled current demand.

† Similar work is being conducted for pediatric rheumatology through other organizations.

Table 4
Excess Demand for Adult Rheumatologists, 2005-2025

	2005	2010	2015	2020	2025
Demand	4,946	5,422	5,968	6,584	7,219
Supply of 2005 Equiv. Rheum.	4,946	5,019	4,940	4,806	4,643
Difference	0	403	1,029	1,778	2,576
Number of Rheum.	4,946	5,198	5,258	5,178	5,008