



## Rheumatoid Arthritis

While rheumatoid arthritis (RA) has long been feared as one of the most disabling types of arthritis, the outlook has dramatically improved for many newly diagnosed patients. Certainly RA remains a serious disease, and one that can vary widely in symptoms and outcomes. Even so, recent advances in treatment have made it possible to stop or at least slow the progression of joint damage. Some new therapies target inflammation thanks to exciting and rapidly developing research in this area; others involve combinations of existing medications to increase benefit for those who suffer from the disease.

### Fast facts

- RA is the most common type of arthritis triggered by the immune system.
- 1.3 million adult Americans have been diagnosed with RA.
- Treatments have improved dramatically and help many of those affected.
- Rheumatologists have the expertise to diagnose this disease correctly and offer patients the most advanced treatments.

### What is rheumatoid arthritis?

RA is a chronic disease that causes pain, stiffness, swelling and limitations in the motion and function of multiple joints. While RA can affect any joint, the small joints in the hands and feet tend to be involved more frequently than others. This produces a pattern of joint disease that rheumatologists regard as characteristic of RA. Inflammation can develop in other organs as well.

The stiffness seen in active RA is typically worst in the morning and may last one to two hours or throughout the entire day. This long period of morning stiffness is an important diagnostic clue, since few other arthritic diseases behave this way. For example, osteoarthritis does not generally cause prolonged morning stiffness.



Other symptoms that can occur in RA include:

- Loss of energy
- Low-grade fevers
- Loss of appetite
- Dry eyes and mouth from an associated condition known as [Sjogren's syndrome](#)
- Firm lumps, called rheumatoid nodules, which grow beneath the skin in areas such as the elbow and hands.

### What causes rheumatoid arthritis?

RA is classified as an autoimmune disease, which develops because certain cells of the immune system don't work properly and begin attacking healthy joints. While the cause of RA remains unknown, new research is giving us a better understanding of the immune and even genetic factors that may be involved in producing inflammation. The primary focus of the inflammation is in the synovium, which is the tissue that lines the joint.

Inflammatory chemicals released by the immune cells cause swelling and damage to cartilage and bone. In

response, new medications

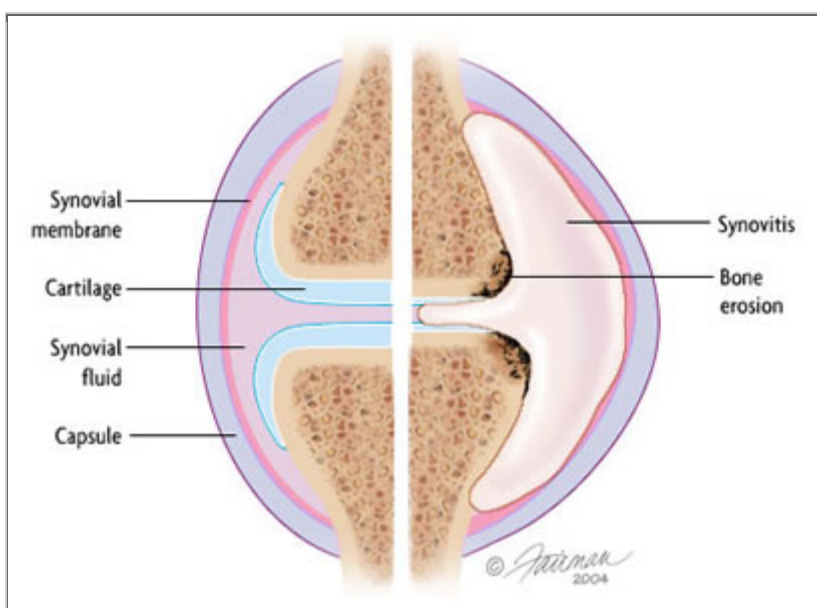
have been developed to specifically block certain signals that cause the body to attack its own immune system resulting in RA symptoms and joint damage.

### Who gets rheumatoid arthritis?

RA is the most common form of inflammatory arthritis, affecting more than 1.3 million Americans. Of these, about 75 percent are women. In fact, 1–3% of women may develop rheumatoid arthritis in their lifetime. The disease most often begins between the fourth and sixth decades of life. However, RA can develop at any age.

### How is rheumatoid arthritis diagnosed?

RA can be difficult to diagnose because it may begin with only subtle symptoms, such as achy joints or a little stiffness in the morning. Additionally, many diseases, especially early on, behave like RA. For this reason, patients suspected of having RA should be evaluated by a rheumatologist, a physician with the



The normal joint structure is pictured on the left. On the right is the joint affected by rheumatoid arthritis which has swelling of the synovium that can lead to damage to cartilage and bone.



necessary skill and experience to reach a precise diagnosis and develop the most appropriate treatment plan.

The diagnosis of RA is based on the symptoms described and physical examination findings such as warmth, swelling and pain in the joints. Certain blood levels commonly found in RA can help in establishing a diagnosis. Tell-tale signs include:

- Anemia (a low red blood cell count).
- Rheumatoid factor (an antibody eventually found in approximately 80% of patients with RA, but in as few as 30% at the start of arthritis).
- Antibodies to cyclic citrullinated peptides (CCP).
- Elevated erythrocyte sedimentation rate or "sed rate" (a blood test that, in most patients with RA, tends to confirm the amount of inflammation in the joints).

X-rays can be very helpful in diagnosing RA, but may not show any abnormalities in the first 3–6 months of arthritis. These X-rays are, however, useful in determining if the disease is progressing. MRI and ultrasound are also being used more frequently to help detect the severity of RA.

It is important to remember that, for most patients with this disease (especially those who have had symptoms for fewer than six months), there is no single test that "confirms" a diagnosis of RA. Rather, diagnosis is established by evaluating the symptoms and results from a physical exam, laboratory tests and X-rays.

### How is rheumatoid arthritis treated?

Therapy for patients with RA has improved dramatically over the past 25 years. Current treatments offer most patients good to excellent relief of symptoms and the ability to continue to function at or near normal levels. Although there is no cure for RA, the goal of treatment is to minimize patients' symptoms and disability by introducing appropriate medical therapy as soon as possible, before the joints are permanently damaged. No single therapy is effective for all patients, and many will need to change treatment strategies during the course of their lifetime.

Successful management of RA requires early diagnosis and, at times, aggressive treatment. Patients with an established diagnosis of rheumatoid arthritis should begin treatment with disease-modifying anti-rheumatic drugs (DMARDs). DMARDs are often used in conjunction with NSAIDs and/or low dose corticosteroids. DMARDs have greatly improved the symptoms and function as well as the quality of life for the vast majority of patients with RA. DMARDs include [methotrexate](#) (*Rheumatrex* and *Folex*), [leflunomide](#) (*Arava*), [hydroxychloroquine](#) (*Plaquenil*), [sulfasalazine](#) (*Azulfidine*), [gold](#) given orally (*Auranofin*) or intramuscularly (*Myochrisine*), [minocycline](#) (*Minocin*, *Dynacin* and *Vectrin*), [azathioprine](#) (*Imuran*), and [cyclosporine](#) (*Sandimmune* and *Neoral*).

For patients with more significant disease, medications referred to as biologic response modifiers or "biologic agents" can specifically target parts of the immune system that lead to inflammation, joint and tissue damage. These medications are also DMARDs, because they slow the progression of the disease. FDA-approved treatments include adalimumab (*Humira*), anakinra (*Kineret*), etanercept (*Enbrel*),



infliximab (*Remicade*), abatacept (*Orencia*), and rituximab (*Rituxan*). Typically these are used with methotrexate as the combination is more beneficial.

The optimal treatment of RA often requires more than medication alone. Proper treatment requires comprehensive, coordinated care, patient education and the expertise of a number of providers, including rheumatologists, primary care physicians, and physical and occupational therapists.

Regular visits with the rheumatologist are necessary to follow the course of the disease and monitor for any side effects related to medications. Regular blood tests and occasional X-rays or CT-scans are necessary as well to manage RA and medications effectively.

#### What is the broader health impact of rheumatoid arthritis?

Recent research indicates that people with RA, particularly those whose disease is not well controlled, may have a higher risk for heart disease and stroke. Talk with your physician about risks and ways to minimize it.

#### Living with rheumatoid arthritis

It is important for people with RA to remain physically active, while occasionally scaling back activities when the disease flares. A consultation with a physical or occupational therapist may help to determine types and what levels of activities are appropriate. In general, rest is helpful when a joint is swollen and inflamed, or when feeling fatigued. At these times, gentle range-of-motion exercises will keep the joint flexible. When feeling better, low-impact aerobic exercises such as walking and exercises to boost muscle strength will improve overall health and reduce pressure on joints.

The diagnosis of a chronic illness is a life-changing event that can cause anxiety and occasional feelings of isolation or depression. Thanks to dramatically improved treatments, these feelings usually decrease with time as energy improves, and pain and limitation decrease. It is important to discuss these normal reactions to illness with health care providers, who can provide the information and resources needed during treatment.

#### Points to remember

- RA has been a primary focus of research about rheumatology. The treatments now available have dramatically improved outcomes for patients. Joint pain and swelling can usually be well controlled and joint damage can be minimized by early treatment.
- Expertise is particularly needed to establish an early diagnosis of RA, to rule out diseases that mimic RA (thereby avoiding unnecessary testing, drug therapy and costs) and to design a treatment plan best suited and customized for the patient. The need for and the risks and benefits of DMARD therapy must also be addressed. Accordingly, the rheumatologist, working with the primary care physician and other health care providers, should play the major role in outlining, implementing and supervising the management of the patient with RA.
- Studies have shown that people who receive early treatment for RA feel better sooner and more often, are more likely to lead an active life, and are less likely to experience the type of joint damage that leads to joint replacement.



### The rheumatologist's role in the treatment of rheumatoid arthritis

RA is a complex disease, but many advances in treatment have been made recently. Rheumatologists are specialists in musculoskeletal disorders and therefore are best qualified to make a proper diagnosis. They can also advise patients about the best treatment options available.

### To find a rheumatologist

For a listing of rheumatologists in your area, [click here](#). Learn more about [rheumatologists](#) and [rheumatology health professionals](#).

### For more information

The American College of Rheumatology has compiled this list to give you a starting point for your own additional research. The ACR does not endorse or maintain these Web sites, and is not responsible for any information or claims provided on them. It is always best to talk with your rheumatologist for more information and before making any decisions about your care.

The Arthritis Foundation  
[www.arthritis.org](http://www.arthritis.org)

National Institute of Arthritis and Musculoskeletal and Skin Diseases Information Clearinghouse  
[www.niams.nih.gov](http://www.niams.nih.gov)

### Updated June 2008

Written by Eric Ruderman, MD and Siddharth Tambar, MD, and reviewed by the American College of Rheumatology Patient Education Task Force.

*This patient fact sheet is provided for general education only. Individuals should consult a qualified health care provider for professional medical advice, diagnoses and treatment of a medical or health condition.*

© 2009 American College of Rheumatology



Rheumatoid arthritis affects the wrist and the small joints of the hand including the knuckles and the middle joints of the fingers.