

## How to Write Image Captions

Include the following details, *if applicable*, when submitting your image(s):

- Title of image – disease: manifestation, location (modality).
  - Image description – pointing out key features seen on the image
  - Learning points related to the image, if appropriate
  - Technical information – provide enough technical information to evaluate the image (stain or imaging technique, i.e., silver stain, or T2-weighted image)
  
- Reference(s) – if image is a rare or unusual manifestation of a rheumatologic disease, reference must be included. Otherwise, inclusion of a reference is based on the judgment of the AVA Subcommittee during peer review of the image.

The following are three sample images with captions from the Rheumatology Image Bank:

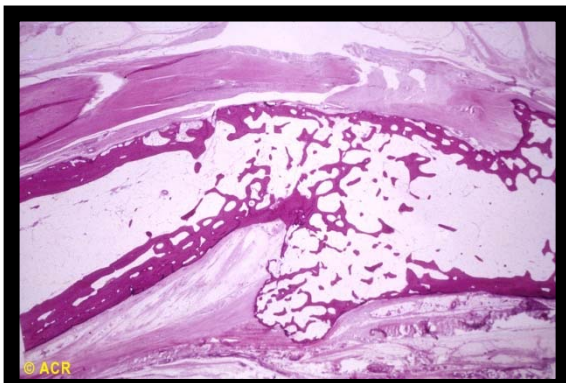
### SAMPLE 1



#### **Rheumatoid Arthritis: Ulnar Deviation and Muscle Atrophy, Hands**

Ulnar deviation and subluxation of metacarpophalangeal joints are present in the hand on the left. The joints also appear swollen. Muscle atrophy has developed in the dorsal musculature of both hands.

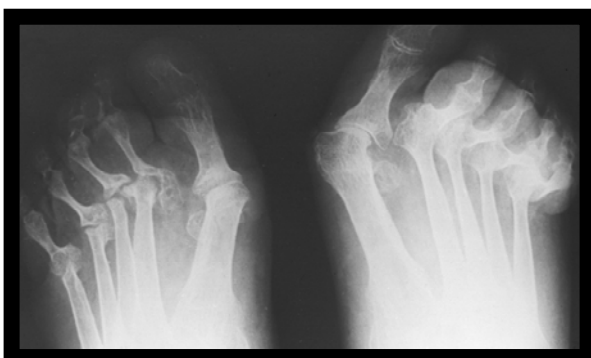
### SAMPLE 2



#### **Rheumatoid Arthritis: Bony Ankylosis, Finger Joint**

A sagittal section through a proximal interphalangeal joint demonstrates complete bony union of the phalanges. The joint cavity is obliterated. Bony hypertrophy is present at the articular margins. There is no evidence of active inflammation remaining. (hematoxylin-eosin stain).

### SAMPLE 3



#### **Rheumatoid Arthritis: Foot Deformities**

Dorsoplantar projection of the forefeet demonstrates severe abnormalities including erosions, osteopenia, lateral deviation, and subluxation of all the metatarsophalangeal joints. Hallux valgus is present.